

TASKMASTER® TM6500

High Performance Compact Grinder

The TASKMASTER® TM6500 is a ruggedly constructed twin shaft grinder that features a highly compact design. The TM6500 offers excellent grinding performance for protection of pumps, valves, centrifuges and more in sludge and raw sewage applications.

Like the larger TM8500, this unit features *Cutter Cartridge®* Technology for high strength. Other features include a small footprint to fit into tight plant locations, a drop-in housing design for easy maintenance, heavy 2" hex shafting and more.

The TM6500 features minimal maintenance. Bearings and highly reliable mechanical seals are located in seal cartridge assemblies. The unit is powered by a 2hp (1.5kw) gear motor.



**Cutter Cartridge® Technology | Small Footprint | Hardened, Alloy Steel Cutters
Tungsten Carbide Seal Faces | One-Piece Drop-in Housing | Effective & Economical**

Options

- S260 Automatic Reversing Controller
- Mounting Frames
- Stainless Steel Construction
- A Choice of Cutter Profiles
- 2 hp (1.5kW) or 3 hp (2.2kW) Motor Available
- Hazardous Area Motor
- Shaft Extension

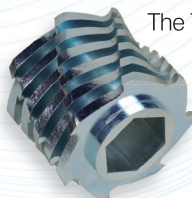
Cutter Cartridge® Technology



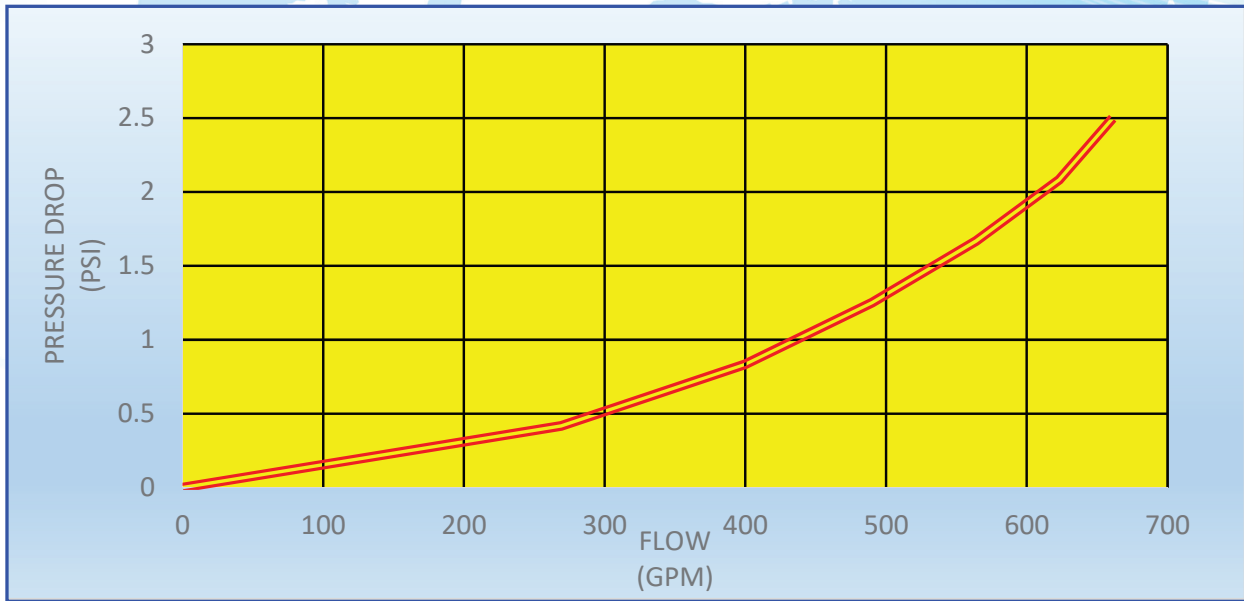
With *Cutter Cartridge®* technology, individual cutter and individual spacer disks are combined into high strength, one piece elements. This design eliminates weak individual cutter and spacer

disks, greatly increasing unit strength. With *Cutter Cartridge* technology, there's no stack retightening required, no shaft scoring problems and no catastrophic stack collapse – problems found with other units.

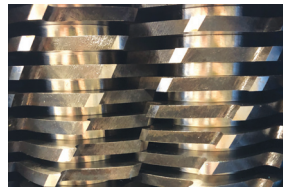
The TM6500 is provided standard for 4" (100mm) pipe sizes. Other configurations can be provided for 6" (150mm) pipe sizes as well as open channels. A special frame is provided for wall mounting in wet wells and pump stations.



4" Inline Flow

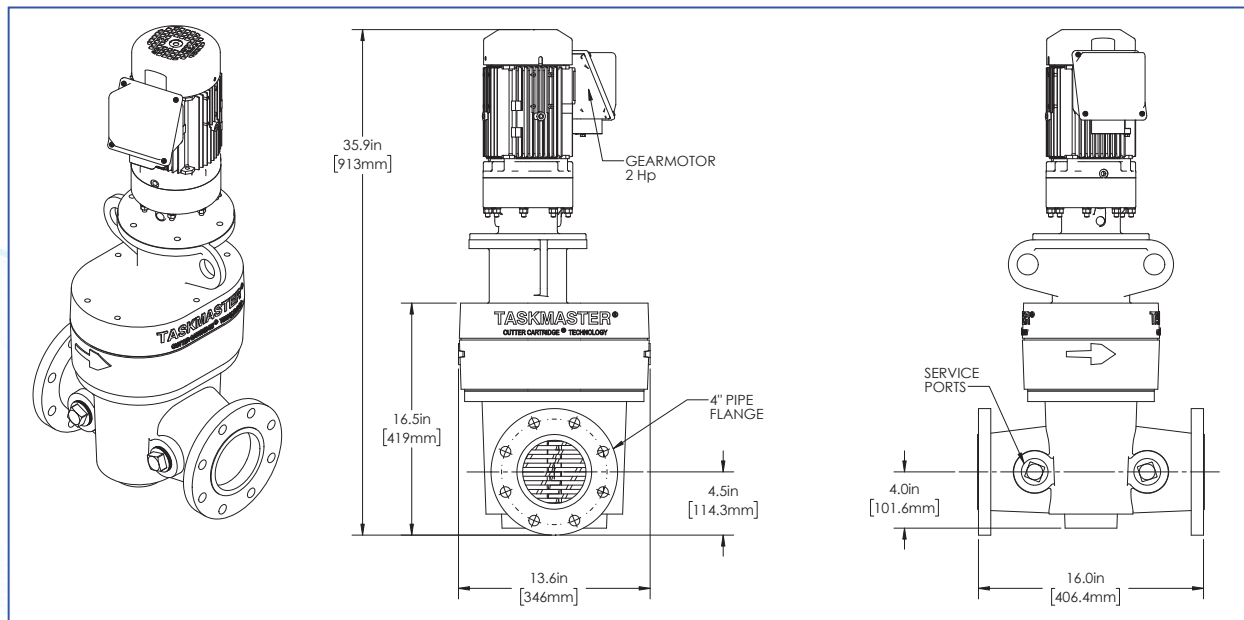


Drop-In Housing with 1 1/2" NPT Ports



Precision Twin Shaft Cutters

Dimensions



Contact factory for certified drawing.